

**ITEM 34. PARKING – POLICE PARKING AND TICKET PARKING –
GOULBURN AND RILEY STREETS SURRY HILLS**

TRIM RECORD NO: 2017/456805

RECOMMENDATION

It is recommended that the Committee endorse the following:

- (A) Reallocation of parking on the northern side of Goulburn Street, Surry Hills between the points 16.5 metres and 34.5 metres (three car spaces) east of Pelican Street, as “No Parking, Police Vehicles Excepted”; and
- (B) Reallocation of parking on the western side of Riley Street, Surry Hills between the points 11.5 metres and 32 metres (three car spaces) north of Goulburn Street, as “2P Ticket 8am-6pm, Mon-Fri” and “4P Ticket 6pm-10pm, Mon-Fri, 8am-10pm, Sat-Sun & Public Holidays”.

VOTING MEMBERS FOR THIS ITEM

<i>Voting Members</i>	<i>Support</i>	<i>Object</i>
City of Sydney		
Roads and Maritime Services		
NSW Police – Surry Hills LAC		
Representative for the Member for Sydney		

DECISION

BACKGROUND

The NSW Police Service have requested consideration of parking changes on Goulburn Street, opposite the Sydney Police Centre and Surry Hills Police Station, due to safety and security concerns.

COMMENTS

The kerb space on the northern side of Goulburn Street, Surry Hills, is currently a combination of “2P Ticket; Permit Holders Excepted Area 18” and “No Parking, Police Vehicles Excepted”.

The NSW Police Force have raised concerns that cars parking along this kerb space compromise safety and security at the Sydney Police Centre and Surry Hills Police Station.

The City proposes to swap the three existing 2P Ticket spaces from the northern side of Goulburn Street, east of Pelican Street, with the three existing Police parking spaces located on the western side of Riley Street, north of Goulburn Street.

This change will group the police parking in one location on the northern side of Goulburn Street, between Pelican and Riley Streets, and improve safety and security around the Sydney Police Centre and Surry Hills Police Station.

The proposed parking changes would limit parking to all vehicles other than authorised police vehicles where the signs are installed.

The proposed new ticket parking on the western side of Riley Street, between Goulburn and Waine Streets, will be changed to “2P Ticket 8am-6pm, Mon-Fri” and “4P Ticket 6pm-10pm, Mon-Fri, 8am-10pm, Sat-Sun & Public Holidays, Permit Holders Excepted Area 18” to match the restrictions in the nearby streets. This would provide improved access to parking for residents and visitors to the area.

CONSULTATION

The City consulted local residents and businesses in the area. There were 1016 letters sent out with one response supporting the proposal and six responses opposing the proposal.

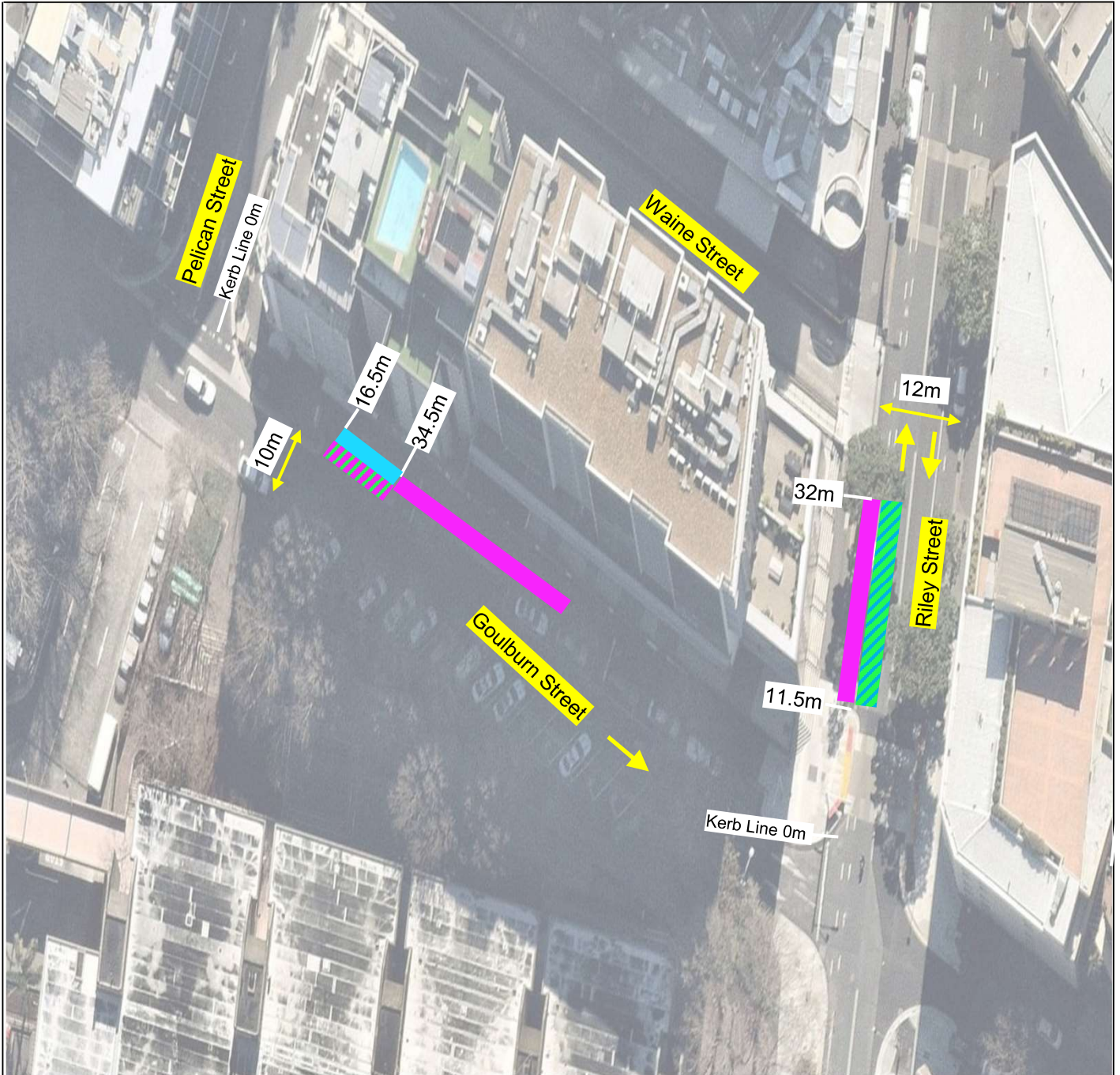
Submissions opposing the proposal noted that the loss of period parking would impact parking availability for commercial businesses, residents and visitors to the area. However given that the proposal will improve Police operations and results in no overall loss of ticket parking spaces, the City recommends proceeding with the proposal.

FINANCIAL



Funds are available in the current budget.

Parking – Police Parking and Ticket Parking – Goulburn and Riley Streets Surry Hills



James Nguyen, Engineering Traffic Officer



Existing

-  No Parking Police Vehicles Excepted
-  2P Ticket Permit Holders Excepted Area 18

Proposed

-  No Parking Police Vehicles Excepted
-  2P Ticket 8am-6pm; Mon-Fri
4P Ticket 6pm-10pm; Mon-Fri
4P Ticket 8am-10pm, Sat-Sun & Public Holidays, Permit Holders Excepted Area 18



PROPOSAL

**PROPOSED PARKING CHANGES
GOULBURN AND RILEY STREETS
SURRY HILLS**



